



# SMART Waste

## Smarter Regulation of Waste In Europe

Date

Prepared with the contribution of the LIFE  
financial instrument of the European Union  
(LIFE13 ENV-UK-000549)



# An EU LIFE+ project for 2014-2019

(LIFE13 ENV-UK-000549)



SMART  
Waste



€4.3m project

Project beneficiaries 50%  
LIFE 50%



4 beneficiaries  
of the project



13 Employees  
(Full Time Equivalentents)

# Project Objectives



- **Objective 1 – Understand Waste Crime**
- Develop innovative intelligence gathering and analytical approaches to identify and understand significant waste crime issues
- **Objective 2 – Tackle, reduce and evaluate**
- Design innovative intelligence led interventions specifically with regard to challenging waste streams, problem waste operators and illegal waste activities
- **Objective 3 – Disseminate learning and legacy**
- Communicate the Project results , sell the benefits of the approach and to influence EU policy and legislative changes



## Innovation

Tools



Financial investigations



Horizon scanning



Competitive Intelligence (CI)

Approaches & techniques



Waste flow audits



Waste flow tracking devices



Remote sensing



Intervention design

Investigations & interventions



Barriers to joint working



Investigations



Intelligence gathering



Cross-agency interventions

## Collaboration



External Steering Group



Intervention group partnerships



Communication Hub

## Communication



Intelligence reports



EU briefing paper



Case studies



Policy recommendation reports



Layman's report



Final conference  
May 2019

# Life SMART Waste Project – Waste Crime Indicators – Lauren Fuller



## Aims

- Combine data analysis with regulatory insight
- Develop indicators of potential criminal activity in waste management sites
- Use data sets from SEPA and other environment agencies
- Identify indicators which are applicable to environment agency data across Europe

## Methods

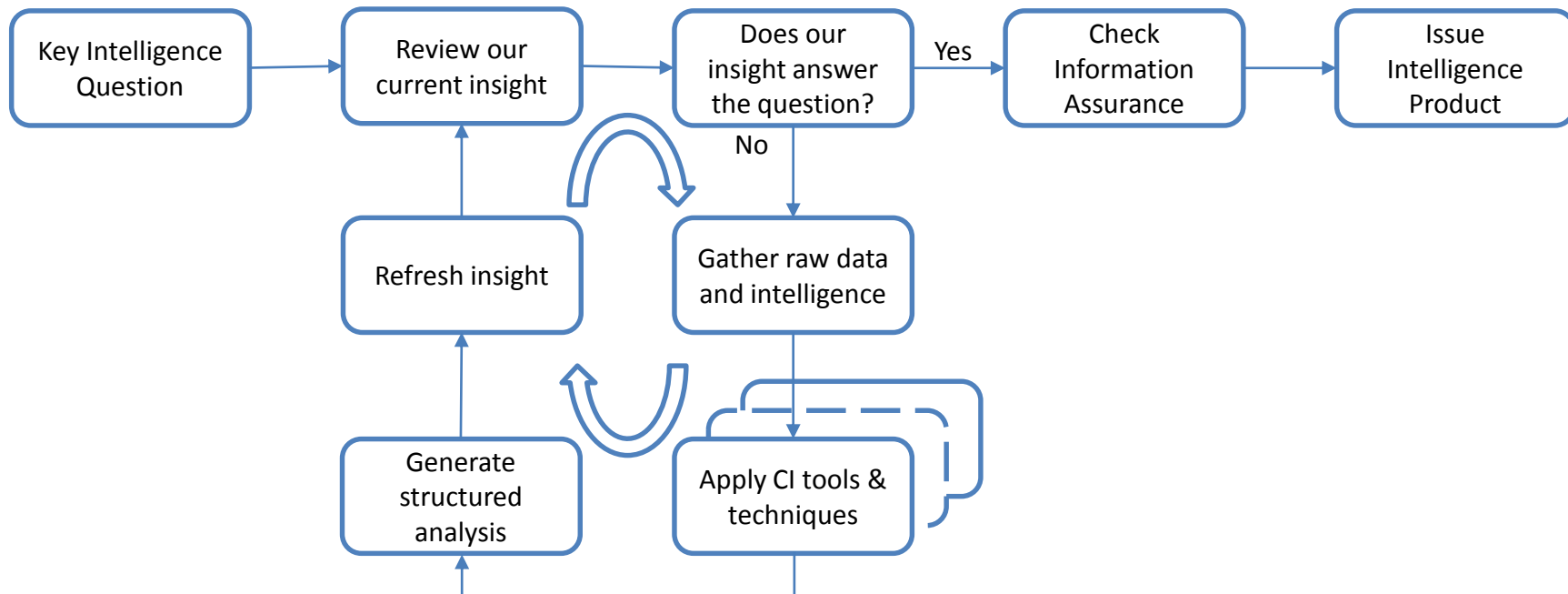
- **Waste flow analysis:** identifies where a waste stream has not conformed to the known or expected flow through the waste management system
- **EWC mismatch analysis:** identifies where EWC codes do not match across the waste data return
- **Disproportionate amounts analysis:** selects a population of comparable sites over a period of time, calculates a proportion of interest for each site (e.g. the proportion of an EWC code received each quarter) and analyses whether there are any outlier sites reporting very high or low amounts compared to the population

# Competitive Intelligence Toolkit – Erik MacEachern



- Identify the key gaps in our understanding of challenging waste streams – **“the things we do not know”**
- Learning and understanding what is happening in the real world we operate in
- The toolkit comprises a set of tools and techniques tailored to be relevant for the LIFE SMART Waste project.
- Analyse and understand issues especially in the area of market / industry behaviour
- Maximising the use of publically available information “open source intelligence”
- SWOT and PESTELO analysis
- Analysing key market barriers, incentives and trends. Examine how value is created or stifled in supply chains
- How to identify and define business problems where Competitive Intelligence could help
- How to select and apply the appropriate combination of tools from the toolkit
- LSW will publish clear communications material and training package for dissemination
- LSW will pilot CI in one specific challenging waste stream – still to be identified
- Feedback and review of how the tools meet the identified need

# Competitive Intelligence life cycle



# Financial Risk Assessment toolkit – Gillian Fowler



- Financial risk assessment tool to assist regulators make decision when processing waste licences or permits
- Risk based approach looking at many aspects of the licence or permit application including the business model of the applicant
- Piloted by SEPA and NRW
- Distributed to 11 EU member states via Europol and IMPEL





# Horizon Scanning Toolkit



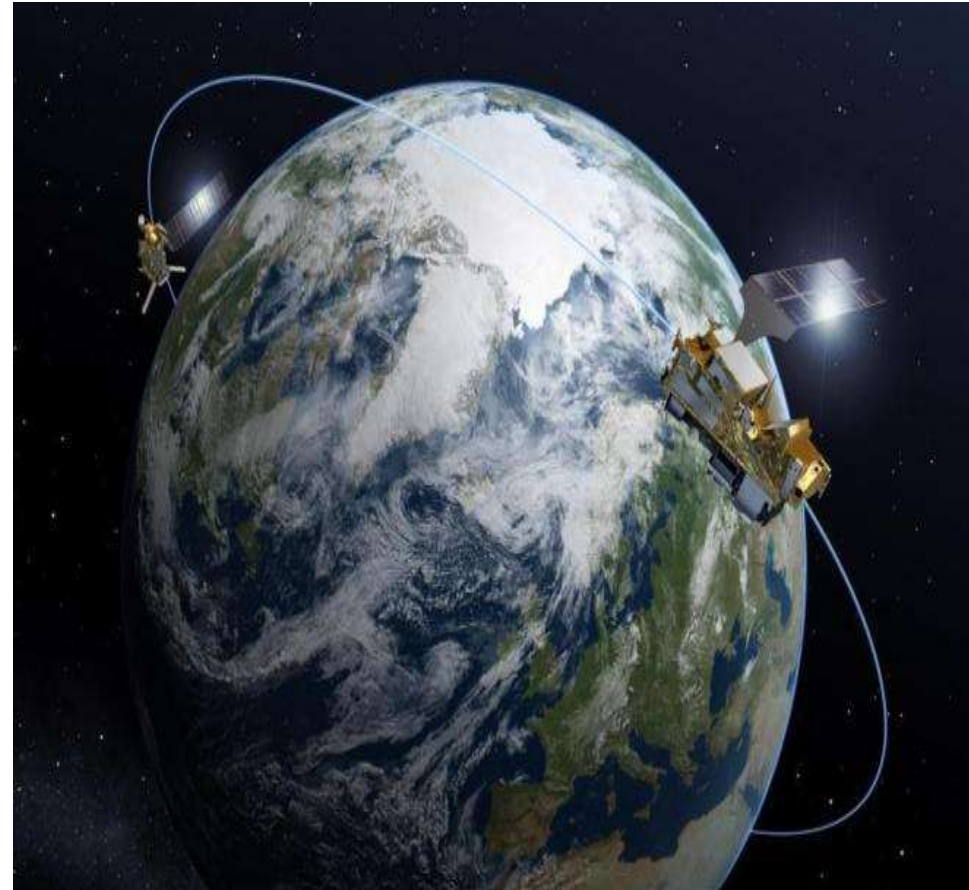
- EU Wide Scan – 2 workshops
- Continuous, Systematic and Participatory process
- 9 steps -Intelligence –Insight - Analysis
- Uses a risk matrix model to rank issues
- Identify links
- Make sense of how these changes are likely to impact or shape the market place or the behaviours of the key players
- Looks for the weak signals
- Near, Mid and Long term
- Learn from experience – China ban on imports - signals since 2013



# Remote Sensing – Susan Stevens – Emmanuel Uduqbezi



- Working with external contractors and project partners
- Using satellite images and weighting of known enablers to produce a heat map of potential waste sites/deposits
- Currently trialling the work with challenging waste streams including tyres, plastics and baled waste



# Life SMART Waste - Legacy



- Final Conference 2019 - results
- After Life Plan published
- Tools and Techniques used by regulators
- Assist in better informed decision making and regulation
- Environment is improved and protected



# Contact us



Web [www.lifesmartwaste.com](http://www.lifesmartwaste.com)

E-mail [lifesmartwaste@sepa.org.uk](mailto:lifesmartwaste@sepa.org.uk)  
[iain.brockie@sepa.org.uk](mailto:iain.brockie@sepa.org.uk)